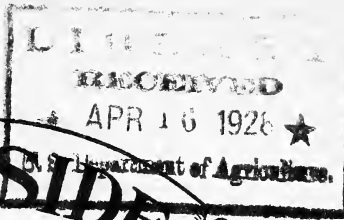


Historic, Archive Document

Do not assume content reflects current scientific knowledge, policies, or practices.

1928



LEO WILKIE, Prop.
MAQUAN LAKE
HANSON, MASSACHUSETTS

Wedding Bouquets
Funeral Sprays
Cut Flowers



VISITORS WELCOME

CALL AT STORE

Tel. Bryantville 8029

Post Office, Bryantville

This is where price and quality count.

Hardy Plants	Peonies
Shrubs	Irises
Fruit and Shade	Phlox and
Trees and Evergreens	Any other Hardy
of all kinds	Plants for Fall Growing
Gladiolus and Dahlia	Bulbs

You are invited to my gardens which are in bloom from July until frost.

DIRECTIONS TO GARDENS

Boston to Quincy, to So. Weymouth, to No. Abington, to Whitman, to Town Hall Corner in Hanson, to Maquan Lake.

HEALTHY STOCK AND GROWN RIGHT GUARANTEE

I guarantee every variety offered true to name. I exert the greatest care in keeping the stock pure, but cannot assume any responsibility for crops other than replace any bulbs or stock found not true to name, or refund the money received for same.

All stock listed here is offered subject to prior sale.

If you cannot find the nursery stock you are looking for in this folder, please send list of your needs and I will cheerfully quote price on same.

Patrons in Canada must secure before ordering, a permit from the Dept. of Agriculture at Ottawa. Shipments prepaid.

All orders will be shipped by parcel post, express or freight, which ever way I deem advisable, prepaid to all parts of the world unless otherwise stated.

Wholesale + Retail

GLADIOLI

All Bulbs 1½ Inches and Up

Alice Tiplady. Large Prim, Orange Saffron Color. 10 cents each, \$1.00 Dozen.

Anna Eburius. Deep Rhodamine, Purple shading into very deep Bordeaux center. 15 cents each, \$1.50 Dozen.

Aeroplane. The color is a beautiful clear deep pink with an exquisite pure white throat. 35 cents each, \$3.50 Dozen.

Albania. Large White, slightly ruffled.

America. Handsome pink tinted Lavender. 10 cents each, 75 cents Dozen.

Arizona. Rose pink, fine cut flower.

Annie Wigman. Pale yellow, with a small dark blotch in the throat, very attractive. 15 cents each, \$1.50 Dozen.



A Bouquet of Gladioli

Baron Hulot. Large spikes of indigo blue, slightly marked white. 15 cents each, \$1.00 Dozen.

Crimson Glow. Glowing Crimson, large. 20 cents each, \$2.00 Dozen.

Carmen Sylvia. Pure snow white with lilac penciled markings. 20 cents each, \$2.00 Dozen.

Cracker Jack. Dark red of a rich velvety texture; blotch of maroon on yellow ground. 10 cents each, 75 cents Dozen.

Chocolate. Chocolate color changing to a lavender. 15 cents each, \$1.50 Dozen.

California Giant. Light mallow purple, then white stripe running through center. 75 cents each, \$7.50 Dozen.

Dorothy McKibbin. Outer edges bright pink, blending to pure apple blossom throat, heavily ruffled. 15 cents each, \$1.50 Dozen.

Dorritt. Large and wonderful lavender-pink marked deeper pink in throat. 20 cents each, \$2.00 Dozen.

Europa. Snowy white, without a color mark. 15 cents each, \$1.50 Dozen.

Elf. Lemon yellow when in bud, open flowers pure white, lemon lip. 10 cents each, \$1.00 Dozen.

GLADIOLI

- E. J. Shaylor.** Pure deep pink ruffled. 20 cents each, \$2.00 Dozen.
- Evelyn Kirtland.** Rose pink, fading to shell pink with scarlet blotch on lower petals. 20 cents each, \$2.00 Dozen.
- Empress of India.** Rich dark red, one of best of recent novelties. 15 cents each, \$1.50 Dozen.
- Early Snowflake.** Beautiful white. 10 cents each, \$1.00 Dozen.
- Flora.** Beautiful golden yellow. One of the new introductions which I consider one of the best yellows in existence. The flowers are well placed and very showy. 15 cents each, \$1.50 Dozen.
- Frank J. Symmes.** Heavy ruffled peach red with silver spots. 15 cents each, \$1.50 Dozen.
- Gold.** A new yellow, a favorite. 25 cents each, \$2.50 Dozen.
- Golden Measure.** The flowers very large of pure yellow. There are not many good yellows but here is a dandy. 25 cents each, \$2.50 Dozen.
- Gaiety.** Bright Salmon pink, with pure white blotches on lower petals. Attractive. 20 cents each, \$2.00 Dozen.
- Giant Myrtle.** Soft pink and white, very large and is a great flower. Don't miss this one. 20 cents each, \$2.00 Dozen.
- Grethen Zang.** Rose pink shading into a salmon. Tall spikes. 10 cents each, \$1.00 Dozen.
- Glory of Holland.** White with slight tinting of pale pink and anthers of delicate lavender. 10 cents each, \$1.00 Dozen.
- Glowing Gem.** Color a beautiful glowing scarlet. The most prominent feature of this variety is its 5 cents each, 50 cents Dozen.
- Herada.** Pure mauve, glistening and clear. Immense. 15 cents each, \$1.50 Dozen.
- Halley.** A delicate salmon pink. 10 cents each, 75 cents Dozen.
- Illuminator.** Finest red. 20 cents each, \$2.00 Dozen.
- Isa Tinkam.** A very rich deep purple crimson, a very popular shade, flowers of medium size and produced of long stem. 20 cents each, \$2.00 Dozen.
- Joe Coleman.** Deep red shading to crimson. 10 cents each, \$1.00 Dozen.
- Lily White.** Almost a pure white, reliable for forcing. Six blooms open at a time. 10 cents each, \$1.00 Dozen.
- Le Marchel Foch.** One of the earliest and largest Gladioli grown. A charming shade of clear light pink, without any shadings. 10 cents each, \$1.00 Dozen.
- Louise.** This variety has been well named. Clear pure lavender of a bluish tinge, has no magenta or purple in it, in my opinion it is one of the finest lavenders ever produced. Beautiful. 15 cents each, \$1.50 Dozen.
- Lustre.** Tall, large colored orange-vermilion. Grand and beautiful. 20 cents each, \$2.00 Dozen.
- L'Immaculee.** Extra tall pure white. 20 cents each, \$2.00 Dozen.
- Liberty.** A bright red with strikingly marked primrose throat. Large well expanded flowers. 15 cents each, \$1.50 Dozen.
- Mrs. H. E. Bothin.** Light pink, with red blotch ruffled. 10 cents each, \$1.00 Dozen.
- Mrs. F. C. Peters.** Tall lavender, a beautiful Glad. Be sure and enter this in your collection. 20 cents each, \$2.00 Dozen.

GLADIOLI

- Mrs. Frank Pendleton.** Light pink, dark red blotch in throat. **10 cents each, \$1.00 Dozen.**
- Mary Pickford.** Color a delicate cream white throat soft yellow. **10 cents each, \$1.00 Dozen.**
- Murici.** Extra fine light blue with darker blotch. Highly praised. **25 cents each, \$2.50 Dozen.**
- Minuet.** New lavender. Bulbs of this variety sold for one hundred dollars each in 1925. Strong grower, very large and of good substance. Ask for price on these. Very scarce.
- Marie Kundred.** Ruffled white, a wonderful Glad., try them. **20 cents each, \$2.00 Dozen.**
- Mrs. Watt.** In coloring one of the most distinct varieties grown, a glowing wine crimson. **10 cents each, \$1.00 Dozen.**
- Mrs. John Hays Hammond.** A beautiful begonia rose, blending to and streaked with a glowing velvety, carmine red throat. Barytayellow thickly dotted and splashed a dull carmine red. Gigantic flowers produced upon sturdy plants. **50 cents each, \$5.00 Dozen.**
- Mr. Mark.** Tall blue, real good. **20 cents each, \$2.00 Dozen.**
- Maine.** An extra nice white. **10 cents each, \$2.00 Dozen.**
- Master Piece.** Magnificent American Beauty color. A giant. **25 cents each, \$2.50 Dozen.**
- Novelty.** An exceedingly odd variety of beautiful light salmon color with orange yellow throat, the whole being dotted and mottled with crimson. **10 cents each, \$1.00 Dozen.**
- Orange Glory.** Orange color, with lighter throat, very fine. **15 cents each, \$1.50 Dozen.**
- Princepine.** One of the best of the new reds, carmine-red with large white blotch. Tall spike and prolific bloomer. **10 cents each, \$1.00 Dozen.**
- Panama.** A perfect Hermosa pink with wax-like flowers. **10 cents each, \$1.00 Dozen.**
- Prince of Wales.** The color is a delicate coral pink with practically no throat markings. **10 cents each, \$1.00 Dozen.**
- Red Copper.** Large deep salmon Rose, heavy flaked blue. **25 cents each, \$2.50 Dozen.**
- 1910 Rose.** Large with pure rose spike. **10 cents each, \$1.00 Dozen.**
- Rose Ash.** Ashes of Roses. A new color in Glads. Tall grower with large filled spike. **15 cents each, \$1.50 Dozen.**
- Rouge Torch.** Large creamy white flowers, with a rouge torch-like tongue on the lower petals. **10 cents each, \$1.00 Dozen.**
- Schwaben.** A pure canary yellow, shading to soft sulphur-yellow when opening, the deep golden yellow center is blotched with brilliant brownish-carmine. Foliage is large and vigorous. **10 cents each, \$1.00 Dozen.**
- Sterling.** A beautiful delicate pale yellow with rich cherry throat. A perfect beauty. **10 cents each, \$1.00 Dozen.**
- Schwaban.** Pure pale sulphur yellow with tiny dark spots on lower petals. **10 cents each, \$1.00 Dozen.**
- Summer.** Lavender pink, very choice, fine for decoration. **10 cents each, \$1.00 Dozen.**
- Syphone.** Color, Aster purple, faint markings of maroon on lower petals. **20 cents each, \$2.00 Dozen.**
- Sulphur Glow.** Ruffled light yellow. Very good. **20 cents each, \$2.00 Dozen.**
- Tyron Beauty.** Very large pink with light markings lengthwise of petals. A beauty is right. **20 cents each, \$2.00 Dozen.**

GLADIOLI

- Violet Beauty.** Choice violet. 20 cents each, \$2.00 Dozen.
- Wine King.** Deep wine color. Very good. 10 each, \$1.00 Dozen.
- Wilbrink.** Large bloom of flesh pink, creamy blotch on lower petals the earliest light colored variety. 10 cents each, \$1.00 Dozen.
- War.** A Giant Red Gladioli, showing from 4 to 6 open flowers at one time. Deep blood red, shading to crimson. 20 cents each, \$2.00 Dozen.
- White Glory.** One of the best white ruffled varieties on market. 10 cents each, \$1.00 Dozen.

GLADIOLI SPECIALS

There is another type of Gladioli with slender stems, smaller flowers, exquisite colorings, and extreme gracefulness of spike. These are the Primulinus Hybrid and have been produced by crossing the large flowered varieties with the wild Species Primulinus.

I am offering these in mixture of all colors, from the lightest apricots, yellows, orange, pink, rich deep rose and reds.

You will want to plant some of these bulbs for cut flowers besides your regular planting. 50 cents Dozen, \$2.50 per 100.

When you order a hundred of these bulbs I send you assorted sizes, in order to give you continuous bloom for a long season, as large bulbs bloom first and smaller sizes bloom in rotation.

THE BIRTHDAY PACKAGE

What could be better for a Birthday Gift? The Birthday Package which provides the pleasure of planting, the delights of growing and the satisfaction of living. Beautify the flower garden with a few nice Glads. Set contains 15 Bulbs, 15 varieties, all labelled, our selection, value \$2.60 for \$2.00; 2 sets for \$3.50.

THE WONDER CHEST

This is sure a wonder. Words cannot praise it too much. This is a carefully planned selection and is sure to satisfy any lover of flowers. If you want variety and lots of color here it is. 50 bulbs, 25 varieties, value \$6.75 for \$5.50; 2 sets, \$10.00.

UNNAMED MIXTURE

These are Bulbs that become mixed when digging and are thrown together in a box. Take a chance and plant a few of these, you may get some expensive varieties. Value \$5.00 for \$3.00 per 100 or \$5.00 per 200.

PEONIES

- Alexander Dumas.** Medium sized, light violet rose, has creamy white collar of narrow petals. Mid season, \$1.00 each, \$10.00 Dozen.
- Avalanche.** Medium to large, fairly compact, white type, flecked with carmine with cream white collar. \$1.00 each; \$10.00 Dozen.
- Dorchester.** Large, compact rose type. Pale hydrangea-pink. Fragrant. Medium dwarf. \$1.00 each, \$10.00 Dozen.
- Duc D Wellington.** Large bomb type. White guards and sulphur yellow center. Medium tall, vigorous grower. 50 cents each, \$5.00 Dozen.

PEONIES

Baroness Schroeder. A very beautiful rose type bloom. Form a bloom, globular compact, not differentiated, not entirely transformed. Color, total effect, flesh and white fading to milk-white; guards clear, collar same as guards, center clear, pleasant fragrance. **\$2.00 each, \$20.00 Dozen.**

Duchess De Nemours. Crown type, pure white in color, medium size and fragrant. **\$1.00 each, \$10.00 Dozen.**

Festiva Maxima. Very globular rose type. Pure white center prominently flecked crimson. Very good for cut flower. **\$1.00 each, \$10.00 Dozen.**

LAKESIDE HOME PEONIE COLLECTION

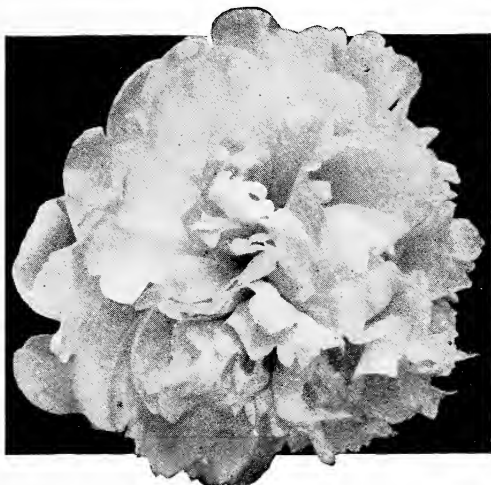
- 1 Queen Victoria (White)\$.50
- 1 Karl Rosenfield (Red) 2.00
- 1 Festima Maxima (White) 1.00
- 1 Mons Jules Elie 1.50

Silvery Pink

- 1 La Tulipe 1.00

Lilac White outer, petals striped crimson

Will send postpaid the above collection, value \$6.00 for **\$5.00.**



Peonie

Golden Harvest. Bomb type. Guard petals lilac-rose, creamy-yellow collar. Blooms in Mid-season. **\$1.00 each, \$10.00 Dozen.**

Karl Rosenfield. A very brilliant crimson-scarlet high built and a first class bloomer. **\$2.00 each, \$20.00 Dozen.**

Liberty. A wonderful pink, the flowers are very large, somewhat flat in appearance. Six to eight inches across borne on good stems, the color grows lighter in age. Don't miss this one. **\$2.00 each, \$20.00 Dozen.**

Many other varieties not listed.

Louise Van Houtte. A very fine red, cheap but good. **50 cents each, \$5.00 Dozen.**

Prince of Darkness. Very good red. **60 cents each, \$6.00 Dozen.**

Venus. Rose type almost white but tinged with shell pink Mid-season. Fragrant. Fine for cut flower. **\$1.50 each, \$15.00 Dozen.**

DAHLIAS

Amun Ra (Dec) An immense decorative. The outer petals of the mammoth blooms are of gorgeous shades of copper and orange shadings to gold and amber. **\$1.50 each.**

- Ballet Girl.** (Cactus) A most interesting Dahlia of ivory, white and orange, each blossom in varying proportions of these colors. It has good form, size, stems and keeping qualities. Plant and cut with F. W. Fellows and Golden West. **\$1.50 each.**
- Bianca.** (Cactus) Very large size and fine form. A vigorous grower; color beautiful rose lilac with flowers on strong erect stems. A dandy. **75 cents each.**
- Champagne.** An immense flower. The color is a delightful warm autumn shade. Very free bloomer, and has a long rigid stem. **\$2.00 each.**
- Daddy Butler.** (H. C.) A large hybrid cactus of fine form. American of fine form. American Beauty in color with a pale rose purple on the reverse of petals. A most prolific bloomer with fine stems. **\$1.50 each.**
- F. W. Fellows.** (Cactus) Flowers of immense size. Composed of numerous long narrow incurved petals of a lively orange scarlet. This is one of the largest and finest Autumn varieties. **50 cents each.**
- Francis Lobdell.** (H. C.) A very large hybrid cactus in a most pleasing color combination, an attractive cluster of white petals at the center with surrounding petals of clear mal-low pink shading to white at tips. Immense. **\$2.00 each.**
- Gladys Sherwood.** (H. C.) A very large cream white flower on a straight stiff stem. A prolific bloomer, fine for garden and exhibition. Grows well in a warm climate. **75 cents each.**
- Judge Marian.** A blending of salmon-pink red orange, yellow and pure gold. Very large. Strong stiff stem. **\$2.00.**
- Jersey Beauty.** (Dec) A very fine true pink flower of perfect shape, produced on long stiff stems. Free bloomer and good keeper. **\$2.00.**
- John H. Slocombe.** A gorgeous flower of an intense deep red, suffused with a beautiful velvety sheen. The petals prettily curled and twisted make this a most attractive variety. The flowers freely produced on unusually long stiff stems. **\$1.00 each.**
- Kitty Dunlap.** (Dec) A delightful shade of the American Beauty Rose. The petals roll slightly, the long stems are practically without leaves. **\$1.00 each.**
- La Favorita** (Hybrid) A beautiful salmon shading from dark to pinker salmon at the twisted points, perfect center, good stems. **\$1.00 stems.**
- Mrs. I. De Ver Warner.** Deep mauve pink. One of the very best grown. Long stiff stem and excellent for cut flower. **\$2.00 each.**
- Mrs. F. F. Shock.** (Dec) Large regular perfect form inner petals cupped, outer flat and reflexed in most approved manner. Color picric yellow at base of petals, blending to almost pomegranate purple at tips. **50 cents each.**
- Mrs. J. Harrison Dick.** (Dec) This plant is a wonderful grower of medium height and branching habit producing perfect flowers in greatest profusion on long stiff stems. The flowers are medium to large, 5 to 7 inches in diameter and are held facing on the stiff stem. Excellent cut flower. **50 cents each.**
- Nobilis.** (Dec) The color is a cream white shading to deep crimson at base of petals. In most

plants the white predominates. In form and growing habits this is the counterpart of Earle Williams but it is more cream colored. **\$1.50 each.**

Priscilla. (Peony) The most beautiful of its class. The flowers are snow white and most beautifully formed, the snow white contrasting with the rich yellow center, gives plenty of flowers. Fine for floral work and bouquets. **\$1.00 each.**

Pride of California (Dec) Called the American Beauty Dahlia. Winner of gold and silver medals. Immense crimson red flowers. **75 cents each.**

Patrick O'mara (Dec) This essential new decorative variety was awarded a Gold Medal by the American Dahlia Society as the best autumn shade variety in existence. The color is a soft and pleasing shade of orange-buff slightly tinged with Neyron rose. It is very large, being 7 to 9 inches in diameter. This is a beauty. **\$1.00 each.**

Paul Michael. (Dec) Flowers large of bright apricot with Bronze shadings, good stems and excellent for decoration. **\$1.50 each.**

Rosalia Styles. (C. Peony) The largest and best of its class. Color is a wonderful live lustrous color, bright tyrian pink tipped lighter reflex pink. The plant is a strong vigorous grower of medium height 5 ft. A giant among Dahlias. **\$1.00 each.**

U. S. A. (Peony Flowered). The color is a glistening, deep orange, not at all common in Dahlias with excellent stems and is good for all purposes. **\$2.00.**

World's Best White. One of the Best Whites in existence. Don't be without this one. **\$2.00 each.**

LAKESIDE HOMESTEAD DAHLIA COLLECTION

1 F. W. Fellows	\$.50
1 Bianca75
1 Mrs. F. F. Shock50
1 Mrs. J. Harrison Dick50
1 Priscilla	1.00
1 Rosalia Styles	1.00
1 Gladys Sherwood75
1 Daddy Butler	1.50
1 Kitty Dunlap	1.00
1 Mrs. I. Der Ver Warner	2.00
1 Patrick O'mara	1.00
1 Pride of California	1.00
1 Judge Marean	2.00

Will send the above collection postpaid, value \$13.00 for **\$10.00.**

LAKESIDE HOME DAHLIA COLLECTION

1 Jersey Beauty	\$1.50
1 Paul Michael	2.00
1 Kitty Dunlap	1.00
1 Mrs. I. De Ver Warner	2.00
1 Patrick O'mara	1.00
1 Paul Micheal	1.50
1 Nobilis	1.50
1 Gladys Sherwood75
1 Daddy Butler	1.50

Will send the above collection postpaid, value \$12.75 for **\$10.00.**

CANNAS

Eureka. The white Canna. The large blossoms are as nearly white as has yet been achieved in Cannas. It is not a real white, though it appears so at a slight distance, but is more nearly cream. **20 cents each, \$2.00 Doz.**

King Humbert. Huge trusses of brilliant orange scarlet blossoms of enormous size. Large reddish bronze leaves. **15 cents each, \$1.50 Doz.**

Rosea Gigantea. A giant. The fine old rose blossoms are immense, though the plant is not tall. **20 cents each, \$2.00 Doz.**

The President. Rich glowing scarlet; the immense flowers with rounded petals are often seven inches across and are produced on strong erect spikes with green leaves. **20 cents each, \$2.00 Doz.**

LAKESIDE CANNA COLLECTION

For a six foot circle:

Outside edge, 3 Dozen King Humbert, value \$4.50.

Inside or center of circle, 2 Dozen The President, value \$4.00.

Will send this collection postpaid for **\$7.00.**

HARDY LILIES

I carry a full line of Hardy Lilies. Let me know your wants and I will quote you price on same.

CROCUS, SPRING-FLOWERING

"THE HERALDS OF SPRING"

Crocuses, among the first flowers to bloom in the early Spring, are always the admiration of everyone, especially when planted amid the grass in lawns, their bright flowers producing a fine contrast. They may also be planted among other Spring-flowering bulbs, such as Tulips, Hyacinths and Narcissi, making a splendid show before the other varieties begin to bloom. The results obtained from planting Crocuses in pots or pans for house blooming are very satisfactory. For this purpose it is advisable to use the best. To grow Crocuses in pots, place the bulbs about one-half inch apart and one-half inch deep, keeping them in a cool place until thoroughly rooted, when they may be brought to the light for blooming. In the open, bulbs should be set at least 3 inches deep.

NAMED CROCUS

King of Blues. Dark blue-purple. **50 cents per dozen; \$3.00 per 100.**

King of Whites. Extra white. **50 cents per dozen; \$3.00 per 100.**

Maximilian. Beautiful sky-blue. **75 cents per dozen; \$3.50 per 100.**

Pres. Lincoln. Purple. **75 cents per dozen; \$3.50 per 100.**

Sir Walter Scott. White striped purple. **50 cents per dozen; \$3.00 per 100.**

Yellow. Large. **\$1.00 per dozen; \$5.00 per 100.**

BULB PLANTING SCHEDULE

Number of Bulbs Required for Planting Circular Beds

Diameter of Bed in feet	3 in. apart	4 in. apart	6 in. apart	8 in. apart
3	127	95	37	
4	217	127	61	37
5	331	225	91	78
6	469	271	127	78
7	631	410	169	96
8	817	469	217	127
9	1027	650	271	165
10	1261	721	331	190
11	1519	940	397	240
12	1801	1027	469	271

CHOICE MIXTURE OF CROCUS

The following mixture is well adapted to bedding, naturalizing or planting in conspicuous places in lawns. The colors include a complete selection of all the shades and markings, as well as the self colors, beautiful pure whites, white varieties delicately tinted, pale yellows and golden yellows, all shades of blue and purple and purple together with variegated varieties.

50 cents per dozen, \$2.50 per 100, \$16.00 per 1,000. 250 at 1,000 rates. Small size bulbs 35 cents per dozen, \$1.75 per 100, \$12.00 per 1,000.

BREEDER TULIPS

These are the old Dutch self-colored Tulips. They are of enormous size and vigorous growth, and are borne on extra tall strong stems. These Tulips are very valuable for the garden, producing by their refined colors a most artistic effect.

Try these extra select Bouquet Tulips and have some of the best grown.

One each of the 10 varieties for \$1.50 prepaid, or 6 each for \$7.00 prepaid.

Archeron. Dark brown-red. \$1.25 per dozen; \$8.00 per 100.

Butterfly. Bright lilac. \$1.25 per dozen; \$8.00 per 100.

Cardinal Manning. Rosy violet, flushed dull bronze very tall. \$1.00 per dozen; \$6.50 per 100.

Diamond. Dark rose, shaded mauve. \$2.00 per dozen; \$12.00 per 100.

Klopstock. A refined violet-blue. \$1.00 per dozen; \$8.00 per 100.

Madras. Dark bronzy yellow and old gold. \$2.00 per dozen; \$12.00 per 100.

Nectar. Carmine-red. \$2.00 per dozen; \$12.00 per 100.

Phryne. Olive-yellow, shaded bronze and lilac. \$2.00 per dozen; \$12.00 per 100.

Professor Schotel. Bright violet blue. \$2.00 per dozen; \$12.00 per 100.

Rose Des Dames. Scarlet pink. \$2.00 per dozen; \$12.00 per 100.

SPECIAL COLLECTION OFFER

Breeder Tulips. Butterfly-Lilac. \$1.25 per dozen.

Breeder Tulips. Madras-Dark bronzy yellow and gold. \$2.00 per dozen.

Darwin Tulips. Gretchen-Silvery pale rose. 75 cents per dozen.

Darwin Tulips. Mrs. Cleveland, delicate flesh. 75 cents per dozen.

12 bulbs each of the above four named Tulips prepaid to any address in the United States, for \$4.50.

\$5.00 SPECIAL OFFER

I will send to any one sending me \$5.00 for this SPECIAL OFFER Prepaid, 3 each of the ten varieties of BREEDER TULIPS, and 5 dozen select mixed CROCUS BULBS.

TULIPS**The 20 Finest Darwins in Cultivation**

The Darwins grow tall, bloom for a long time, and last well as cut flowers. If planted six to eight inches deep and left undisturbed, will flower for many seasons.

Shipped prepaid to any part of the world at prices below. One each of the 20 Finest Darwin Tulips listed for \$1.50 prepaid.

- Clara Butt.** An exquisite shade of clear pink flushed salmon-rose; a large flower of remarkable beauty. The finest Darwin of its color. 21 inches tall. **75 cents for 12; \$5.00 per 100.**
- Dream.** A beautiful soft lilac, large flowers of fine form. 26 inches in height. **75 cents for 12; \$5.00 per 100.**
- Europa.** Glowing salmon scarlet, shaded rose, a beautiful flower. **\$1.00 for 12; \$6.00 per 100.**
- Farncombe Sanders.** Fiery rose-scarlet, inside vivid cerise-scarlet with white center marked blue. Large broad petaled flower of perfect shape. One of the finest sorts, if not the finest of all the reds. 25 inches tall. **75 cents for 12; \$5.00 per 100.**
- Glow.** (Claude Gillot.) Dazzling vermilion-scarlet, white base with blue markings, large flower of excellent shape. Like a large Poppy, it is so brilliant. 23 inches in height. **\$1.00 for 12; \$6.00 per 100.**



Shrub

DARWINS TULIPS

- The Yellow Darwin.** (Ingelscombe Yellow.) Large globular flowers of canary yellow. A splendid novelty. 26 inches in height. **75 cents for 12; \$5.00 per 100.**
- William Copland.** Well-formed flowers of a fine lilac tone. The best and finest early forcing Darwin Tulip, and therefore invaluable for cutting. Very fine for the border. Height 28 inches. **75 cents for 12; \$5.50 per 100.**
- Zulu.** Rich velvety purple-black. Large egg-shaped flower. **75 cents for 12; \$5.00 per 100.**
- Loveliness.** Soft carmine rose, very warm and brilliant color. **75 cents for 12; \$5.00 per 100.**

Pride of Haarlem. (See illustration.) One of the largest tulips grown, of excellent form and great beauty. In color a brilliant rosy-carmine suffused purplish blue at base. For groups this variety is unsurpassed; both for its glorious color and its stately habit. 28 inches high. 75 cents for 12; \$5.50 per 100.

Princess Elizabeth. Beautiful clear deep pink, changing with age to rose-pink, white base. Large flower of perfect shape, quite like a Rose when first open. Splendid for the border or for forcing. \$1.00 for 12; \$6.00 per 100.

Gretchen. Silvery pale rose, flushed white, inside soft pink with white center marked blue. A very beautiful flower of delicate color. 75 cents for 12; \$5.00 per 100.

Sir Harry Veitch. Rich blood red, blue base; large bold flower. Height 28 inches. 75 cents for 12; \$6.00 per 100.



Princess Elizabeth

Massachusetts. Vivid pink with white center. One of the best of its color for beds; splendid form. Height 26 inches. 75 cents for 12; \$5.50 per 100.

May Queen. Soft lilac rose with white center marked blue. \$1.00 for 12; \$6.00 per 100.

Mrs. Cleveland. Beautiful delicate flesh color. Extra good. \$1.00 for 12; 6.00 per 100.

Painted Lady. Creamy white, faintly tinted soft heliotrope when open. A very beautiful flower resembling a Water Lily. 27 inches in height. 75 cents for 12; \$5.00 per 100.

Princess Juliana. Salmon orange scarlet, a beautiful flower. \$1.00 for 12; \$6.00 per 100.

SINGLE EARLY TULIPS

One each of the 12 Single Early Tulips listed below for \$1.25 prepaid. 3 of each for \$3.50. 6 of each for \$6.00 prepaid.

Single Early Tulips should be planted about 5 inches deep and from 5 to 6 inches apart. To obtain the best results, both when forcing and when planting in your garden, the very finest select quality, heaviest top-size bulbs should be used.

It is this very scarce quality of bulbs that we furnish exclusively and upon such quality our prices have been based.

Artus. A large brilliant flower of dazzling scarlet. Splendid for out of door planting in mass or groups where it is very showy. Early flowering, dwarf grower. 75 cents for 12; \$5.50 per 100.

Brilliant. Star—Brilliant scarlet, black center, large flower, tall erect stem. A grand variety for forcing and for bedding. \$1.00 for 12; \$7.50 per 100.

Couleur de Cardinal. A warm red Tulip with a plum-colored bloom on the outer petals. Handsome, globular form and a strong stem that makes it particularly fine for bedding. Creates a rich effect planted among purple pansies. Its place is essentially in the open where it produces an effect both rich and satisfying. Height, 13 inches. \$1.00 for 12; \$8.00 per 100.

Cottage Maid. Soft pink suffused with white. 75 cents for 12; \$5.50 per 100.

Flamingo. Brilliant dark rose, slightly lighter rose edge. Large round flowers of very great substance, highly recommended for forcing and for bedding. \$1.00 for 12; \$7.00 per 100.

Fred Moore. Bright orange, scarlet shaded, early forcer. \$1.00 for 12; \$6.00 per 100.

Keizerkroon. (Grand Duc.) Of a glorious and attractive blending of colors. Scarlet red with broad yellow margin. Large flower that is well formed, and proves to be one of the showiest. A strong sturdy grower and one of the finest tall varieties for bedding. Early to blossom. A favorite everywhere. \$1.25 for 12; \$9.00 per 100.

Prosperity. Brilliant dark rose, extra for forcing, flowers of medium size, best commercial variety. \$1.00 for 12; \$7.00 per 100.

Pottebakker Scarlet. Tall early bright scarlet with yellow center. \$1.00 for 12; \$8.00 per 100.

Princess Marianne. White, slightly tinged rose, large flowers, excellent for bedding. \$1.25 for 12; \$8.50 per 100.



A Bed of Tulips

Notice

My Tulips are all top-size bulbs, not seconds nor third size. Remember, everything is guaranteed to be perfectly satisfactory in every way. Be sure to try some of my Tulips and other Fall bulbs and plants this season.

Baronne de la Tonnaye. Bright rose margined blush-rose, flower of large size. Height 26 inches. **75 cents for 12; \$5.00 per 100.**

Bartigon. Fiery crimson, white centre; a strong grower and excellent for forcing. Enormous. **\$1.00 for 12; \$7.00 per 100.**

Yellow Prince. Golden-orange yellow; the best of the low-growing yellow Tulips; sweet-scented. **\$1.00 for 12; \$6.00 per 100.**

White Hawk. (Albion.) Pure white, very large flowers of great substance, which last very long. It is a grand market variety. **\$1.00 for 12; \$7.00 per 100.**

SELECTED DOUBLE EARLY TULIPS

With few exceptions the Double Tulips should be used for bedding only, as they do not force so well as the single varieties. While the Double Tulips may not be quite so effective as the single sorts, the flowers are more durable, and, as they bloom later, they prolong the flowering period.

Usually it is advisable to use only one variety of Double Tulips in a bed, rather than to combine them as with the Single Tulips. Beds of different varieties can usually be arranged within a few feet of each other, thus permitting the characteristics of each variety to stand out distinctly, and also to give the effect of one large bed of double flowers.

One each of the 4 Selected Double Tulips shipped prepaid for 40 cents. Three of each for \$1.00. 6 of each for \$2.00.

Boule de Neige. (White Peony.) Pure White. **\$1.00 for 12; \$7.00 per 100.**

Couronne D'Or. A magnificent full, deep golden-yellow slightly shaded orange. An exceptionally good bedding variety and splendid for forcing and cutting. Height, 11 inches. **\$1.00 for 12; \$8.00 per 100.**

Murillo. An exquisite soft pink, with white markings. Makes beautiful beds and is the most easily forced. Height, 11 inches. **\$1.00 for 12; \$8.00 per 100.**

Rex Rubrorum. Scarlet, green tipped, for bedding only. **\$1.00 for 12; \$8.00 per 100.**

TULIP MIXTURES

Single Early Tulips. Finest mixture. **50 cents for 12; \$4.00 per 100.**

Double Early Tulips. Finest mixture. **60 cents for 12; \$5.00 per 100.**

Beautiful Darwin Rainbow Mixture. **50 cents for 12; \$4.00 per 100; \$38.00 per 1,000.**

NARCISSI

DAFFODILS AND JONQUILS

Culture Outside. The large-flowered, or the sorts which have large bulbs, should be planted from 4 to 6 inches deep and about 5 inches apart. Planting should be started as soon as possible after October 1st, but bulbs may be planted any time before the ground is frozen too hard to work.

Culture in Pots. As a general rule, treat Narcissi the same as Hyacinths. They should be planted about 6 bulbs in a 6-inch pot or pan and put in a

dark and cool place where they may develop their roots. Let them remain until January 1st, when they may be removed to a warmer temperature, but kept in the dark until the foliage is about 6 inches high; then bring to the light and allow them to flower.

There is at the present time a very large assortment of Narcissi from which to make selections, and nearly all are of a quality worthy of cultivation. It is almost impossible to list the complete line of these beautiful Spring flowers, but the following few I offer are varieties which I deem will give the best satisfaction.

I recommend the large Double Nosed Bulbs, as they are Mother Bulbs that I can guarantee to bloom. They cost a trifle more, but are twice the value, and I can recommend them as far superior to the ordinary sizes. Bulbs shipped prepaid to any part of the world at prices quoted.

Two each of the 5 Different Varieties of Narcissi, Daffodils and Jonquils for \$1.50 prepaid.

Seven each of the 5 varieties for \$5.50 prepaid, or fourteen of each for \$10.00.

Bicolor, Empress. A new giant variety with immense flowers. Rich yellow trumpet with sulphur-white perianth. This variety and "Emperor" are the most permanent sorts, being splendid for the garden and the best for naturalizing. Extra heavy double-nosed bulbs. **\$1.50 for 12.**

Bicolor, Victoria. Erect flowers with golden-yellow trumpet and pure white perianth. Flowers large; fine for forcing. Extra heavy double-nosed bulbs. **\$1.50 for 12.**

Emperor. (Ajax Type.) (See above illustration.) New giant variety with immense flowers, often three and one-half inches across. Rich, full, yellow trumpet; deep primrose perianth. Splendid for forcing or outside planting. Extra heavy double-nosed bulbs. **\$1.50 for 12.**

Golden Spur. Another giant variety of rich golden-yellow. Extra large double-nosed bulbs. **\$1.50 for 12.**

King Alfred. A new gigantic remarkably handsome Daffodil; unrivaled in size and beauty. Exceptionally large, golden yellow flower with deeply frilled mouth; elegantly recurved. Of lasting quality. Selected extra heavy, double-nosed bulbs. **\$4.00 for 12.**

I carry a full line of Hardy Plants. Ask for list.

IRISES

NEW AND RARE IRISES

Afterglow. Misty lavender lit with yellow at center, 40 inches. **\$1.00 each.**

Caprice. Phlox purple flowers, falls brilliant, stalk short and widely branched, growth vigorous, 20 inches. **50 cents each, \$5.00 Dozen.**

Ingeborg. Pure white, large flowers of handsome form. **50 cents each, \$5.00 Dozen.**

Monsignor. Standards violet. Falls heavily veined a deeper purple. **50 cents each, \$5.00 Dozen.**

Queen Alexandra. Standards fawn, short with lilac. Falls lilac, reticulated bronze at base. Beard yellow. **50 cents each, \$5.00 Dozen.**

IRISES OF EXCEPTIONAL MERIT

- Assendus.** Standards, lavender-blue. Falls, same shade of blue but darker towards the tips and with veining of dark red at the base. A very attractive blue. **25 cents each.**
- Flavescens.** Standards and Falls, a delicate shade of soft yellow. Fine for massing. **25 cents each, \$2.50 Dozen.**
- Herant.** Standards beautiful lavender-blue. Falls blue. Very large and tall. **25 cents each, \$2.50 Dozen.**
- Hundred other varieties not listed.**
- Madam Chereau.** White with blue border, the pride of the German Iris. **50 cents each, \$5.00 Dozen.**
- Walhalla.** Blue and purple, very showy. **50 cents each, \$5.00 Dozen.**
- Rhein Nixie.** Choice new German Iris. One of the largest and finest Standards, pure white. Falls deep violet-blue with a white edge. **50 cents, \$5.00 Dozen.**
- Sherwin Wright.** Flowers small but produced freely giving fine effect in mass. Color clear, deep golden yellow. Strong grower. 2 ft. **50 cents each, \$5.00 Dozen.**
- Louis Meyer.** Gold and purple, very good. **50 cents each, \$5.00 Dozen.**
- Helga.** Lemon yellow with pearl shading. Huge flower. **50 cents each, \$5.00 Dozen.**
- Rose Unique.** Bright rose, very good. **50 cents each, \$5.00 Dozen.**
- Nebelungen.** Olive green and purple. Very showy. **35 cents each, \$3.50 Dozen.**
- Speciosa.** Claret, very attractive. **50 cents each, \$5.00 Dozen.**
- Lohengrin.** Standards and Falls of catalyea-rose, one of the largest and best of the Irises to my knowledge and without. **50 cents each, \$5.00 Dozen.**

LAKESIDE HOME IRIS COLLECTION

1 Madam Chereau	\$.50
1 Walhalla50
1 Helga50
1 Lohengrin50
1 Sherwin Wright50
1 Rhein Nixie50
1 Queen Alexandra50
1 Flavescens25

Will send postpaid the above collection, value \$3.75 for **\$3.00.**

PHLOX

- Athis or Lothair.** Deep clear Salmon. Very fine. **35 cents each, \$3.50 Dozen.**
- Albion.** White with faint red eye. **35 cents each, \$3.50 Dozen.**
- Beacon.** Brilliant cherry red one of the best red shades grown. **50 cents each, \$5.00 Dozen.**
- Bridesmaid.** One of the best Phlox grown. White with large rose-crimson center. Very showy and desirable. Plants exceptionally sturdy producing large trusses. Medium height. **50 cents each, \$5.00 Dozen.**
- Blue Hills.** A beautiful lavender-blue, very large trusses. **75 cents each, \$7.50 Dozen.**
- Champs Elysee.** Fine, rich crimson. **35 cents each, \$3.50 Dozen.**

Coquelicot. Brilliant new Phlox. The finest and brightest red of all the Phlox, the color is a bright orange-scarlet. The plants are dwarf, exceptionally sturdy, and the individual flowers and trusses are very large. **50 cents each; \$5.00 Dozen.**

Gruppenkoenigin. One of the finest new Phloxes. Deep mallow pink with tyrian rose eye. Very large trusses, individual flower of enormous size. **50 cents each, \$5.00 Dozen.**

Jeanne D'Arc or Snow Queen. Undoubtedly the very finest pure white variety to date. The plants are extra strong growers. **25 cents each, \$2.50 Dozen.**



A Field of Phlox

LAKESIDE HOME PHLOX COLLECTION

1 Jeanne D'Arc	\$.25
1 Athis or Lothair35
1 Albion35
1 Beacon50
1 Bridesmaid50
1 Blue Hills75
1 Champs Elysee35
1 Coquelicot50

Will send postpaid the above collection, value \$3.55 for **\$3.00.**

NURSERY DEPARTMENT

California Privet. 3 year cut back, 2-3 ft. 15 cents each, **\$12.00 per 100.**

Barberry Thunbergii. 12-15 inches. 2 year old. 10 cents each, **\$8.00 per 100.**

SHRUBS

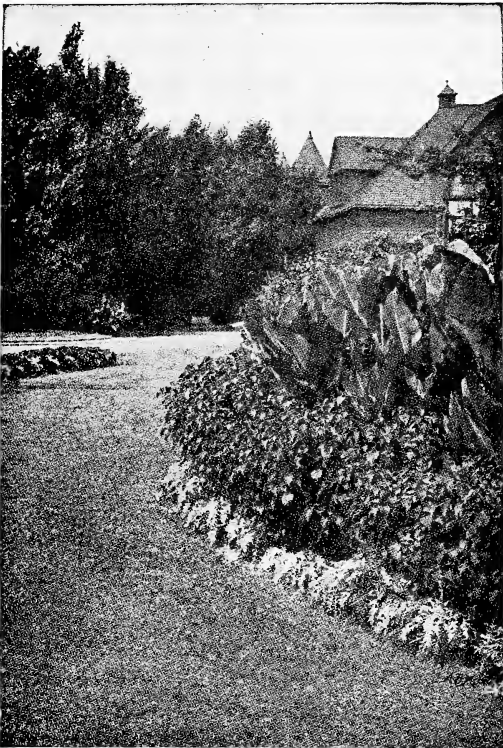
Deutzia. We are indebted to Japan for the valuable genus of plants, "Crenata" Flora Plena, producing large double white flowers, backs of petals slightly tinted rose. **75 cents each, \$7.50 per 10.**

Snowball. (Viburnum) A well known favorite shrub, with globular clusters of white flowers blooming the latter part of May. **75 cents each, \$7.50 per 10.**

Golden-Leaved Syringa. A very pretty plant of medium size with golden yellow foliage. It retains its color the entire season. **75 cents each, \$7.50 per 10.**

HYDRANGEAS

- Arborescens Grandiflora.** 2-3 ft. Hills of Snow. 75 cents each, \$7.50 Dozen.
- Spirea.** Van Houette. 2-3 ft. Pure white flowers. 50 cents each, \$5.00 Dozen.
- Athlea or Rose of Sharon.** Bush form. Assorted colors. 60 cents each, \$5.00 per 10.
- Athlea or Rose of Sharon.** Tree form. Assorted colors. \$1.50 each, \$12.00 per 10.
- Hydrangea Paniculata Grandiflora.** Without doubt the best known and most popular Autumn flowery shrub in cultivation at the present time. The flowers which are borne in dense pyramidal panicles a foot long in the greatest profusion are white when they first open. An extra fine bush. \$1.00 each, \$10.00 per Dozen.



Hardy Border

LAKESIDE HOME SHRUB COLLECTION

- | | |
|--|--------|
| 1 Hydrangea P. G. | \$.75 |
| 1 Spirea Van Houtter | .50 |
| 3 Athlea or Rose of Sharon | 1.80 |
| Bush Form | |
| 1 Athlea Tree Form | 1.50 |
| 1 Golden-Leaved Syringa | .60 |
| 1 Snowball (Viburnum) | .60 |
| 1 Golden Leaved Syringa | .50 |
| Will send postpaid the above collection, value \$6.25 for \$5.50. | |
| Climbing Roses. 2 yr. No. 1. Climbing American Beauty. Rosy Crimson. This is a wonderful Rose. 75 cents each, \$7.50 Dozen. | |
| Dorothy Perkins. Shell pink. Don't be without this in the Flower Garden. 50 cents each, \$5.00 Dozen. | |
| Crimson Rambler. Deep Crimson. 50 cents each, \$5.00 Dozen. | |

Dr. Van Fleet. Flesh pink, rosy flesh center. **\$1.00 each, \$10.00 Dozen.**

GRAPES

Concord. 2 yr. One of the most profitable varieties grown. Try it. **60 cents each, \$5.00 per 10.**

Niagara. The Grapes are white and are produced in very large full bunches. Fine for the table. **60 cents each, \$5.00 per 10.**

Brighton. The Grapes are red, very good flavor. An excellent grape. **60 cents each, \$5.00 per 10.**

APPLE TREES

Baldwins. What the Bartlett pear is to the pears the Baldwin is to the apples. Very fine winter apple, large bright red, crisp, juicy and rich. 5 to 7 ft. **\$1.35 each or \$12.00 per 10.**

Delicious. A remarkable variety introduced in the West several years ago. Fruit large, nearly covered with brilliant dark red, flesh, fine grained crisp and melting, juicy with a delightful aroma. A splendid keeper and shipper. **\$1.50 each.**

McIntosh. Medium size, nearly covered with dark red. Flesh white fine, very tender, juicy and refreshing with attractive quince-like flavor. It comes in young, and is a good annual bearer, yielding large crops of good fruit almost annually. **\$1.35 each, \$12.00 per 10.**

Northwestern Greening. Tree a splendid, vigorous grower quite hardy. Fruit large to very large; green becoming yellowish green when ripe. Flavor a good sub-acid. Keeps until March. **\$1.35 each, \$12.00 per 10.**

PEAR TREES

Bartlett. Rich golden-yellow when ripe, often with soft blush, large, thin skinned, buttery and melting with a rich musky flavor. Tree strong grower, bears young. Excellent for canning. When planting your orchard try some of these. **\$1.35 each or \$12.00 per 10.**

Beurre Bosc. Greatly esteemed. A large yellow pear, flesh white, rich and delicious, has long stem which allows it to sway in heavy winds without dropping. The tree is a slow grower but most productive. Keeps until New Years. **\$1.50 each.**

Kieffer. Large to very large, skin yellow with a light vermilion cheek flesh, brittle, very juicy with a marked musky aroma, good quality. Excellent for canning. **\$1.35 each or \$12.00 per 10.**

LAKESIDE HOME FRUIT COLLECTION

1 Baldwin	Apples	\$1.35
1 Delicious	"	1.50
1 McIntosh	"	1.35
1 Northwestern Greening	"	1.35
1 Bartlett	Pears	1.35
1 Beurre Bosc	"	1.50
1 Kieffer	"	1.35
1 Niagara	Grape	.50
1 Concord	"	.50
1 Brighton	"	.50

Will send postpaid the above collection, value \$11.05 for **\$10.00.**

EVERGREENS

I also carry a full line of Evergreens. Let me know your wants, and I will quote you price on same.



A Field of Irises

